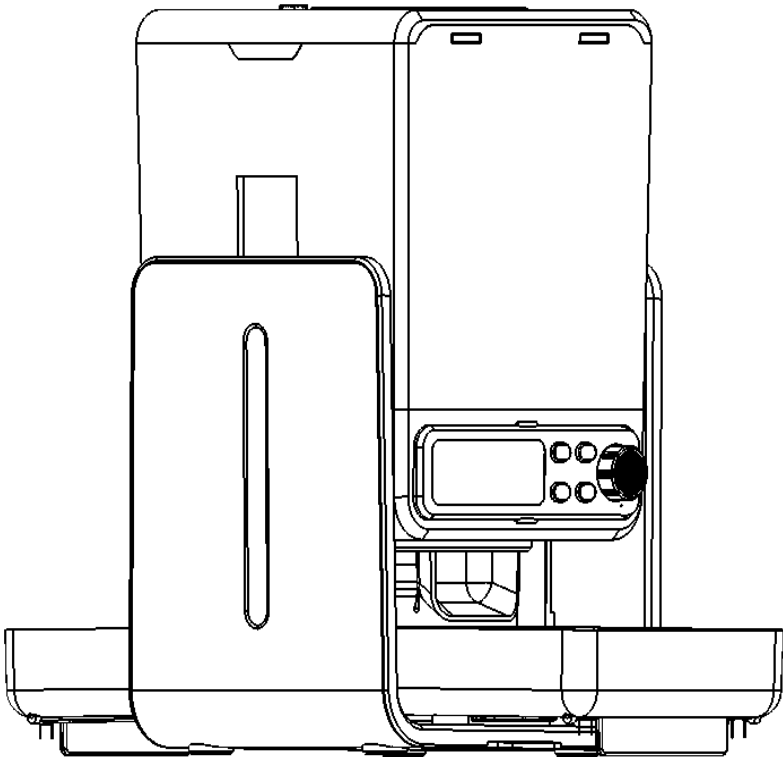




Automatic Pet Feeder User Manual

XWSQ01

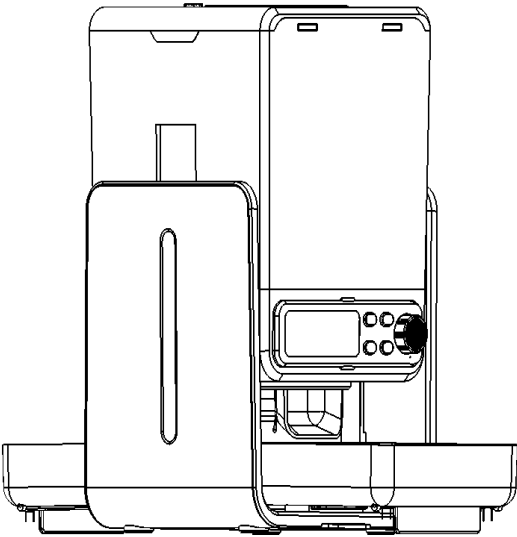


Please read the user manual carefully before using the product and keep it properly.

Contents

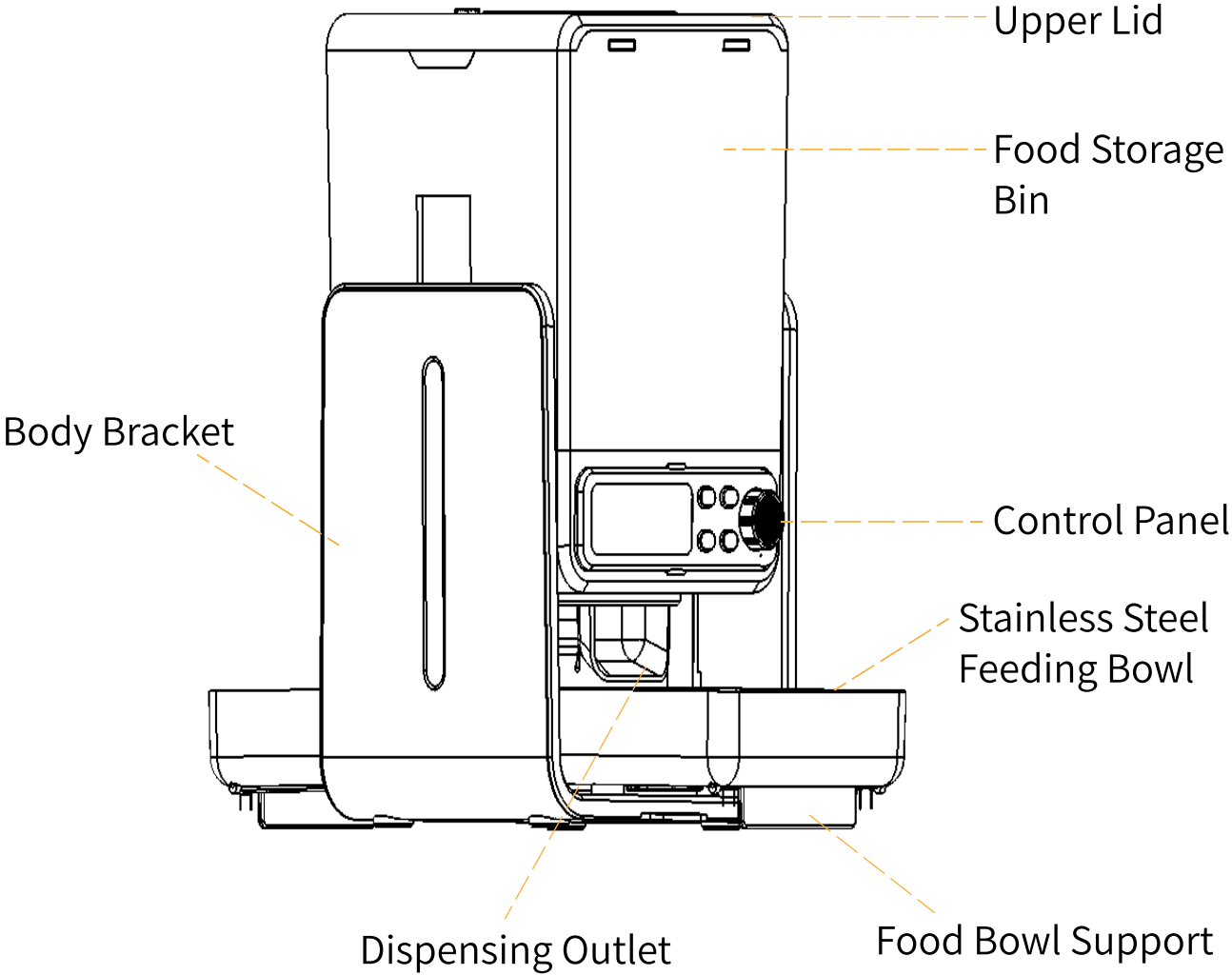
Packing List	01
Product Introduction	02
Product Specifications	05
Product Installation (Mechanism).....	06
Product Usage (Main Control)	09
Program Settings (Control Panel).....	10
The Desired Amount of Kibbles	15
Cleaning and Maintenance	17
Important Notes	19
Safety Precautions	20
Simple Troubleshooting	21
Contact Us	22

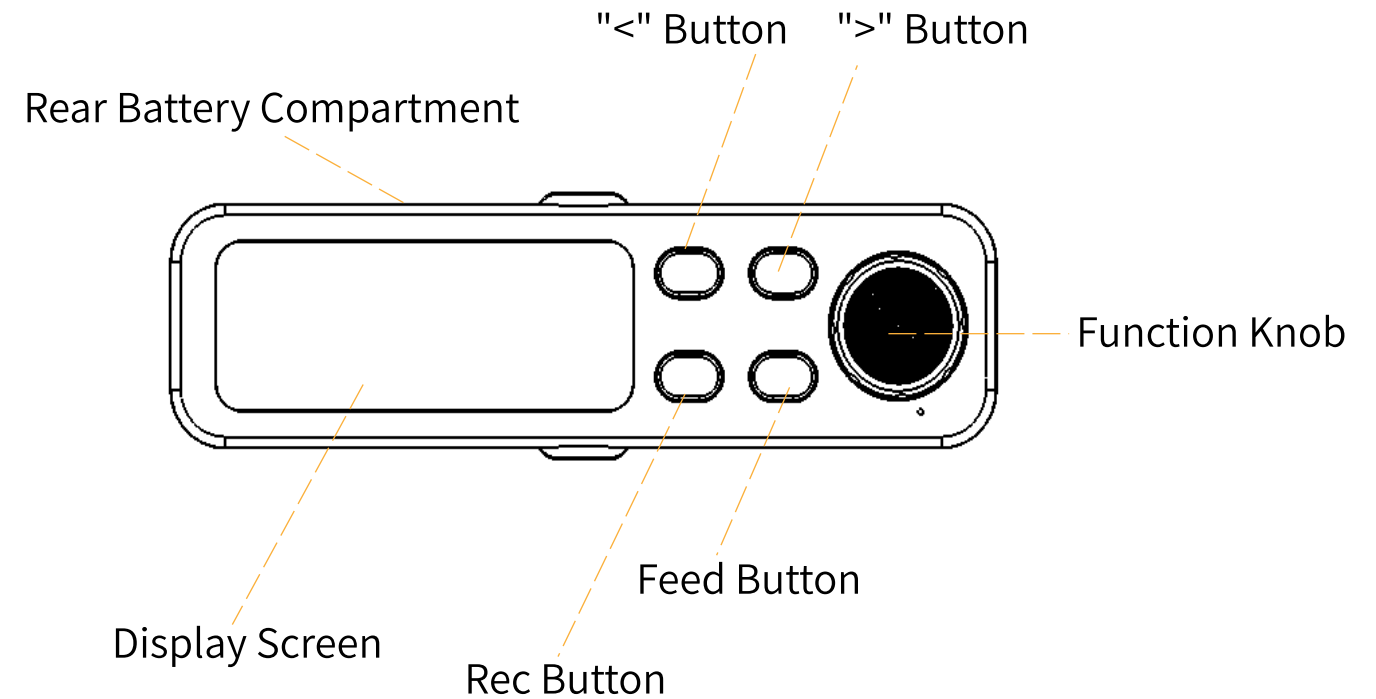
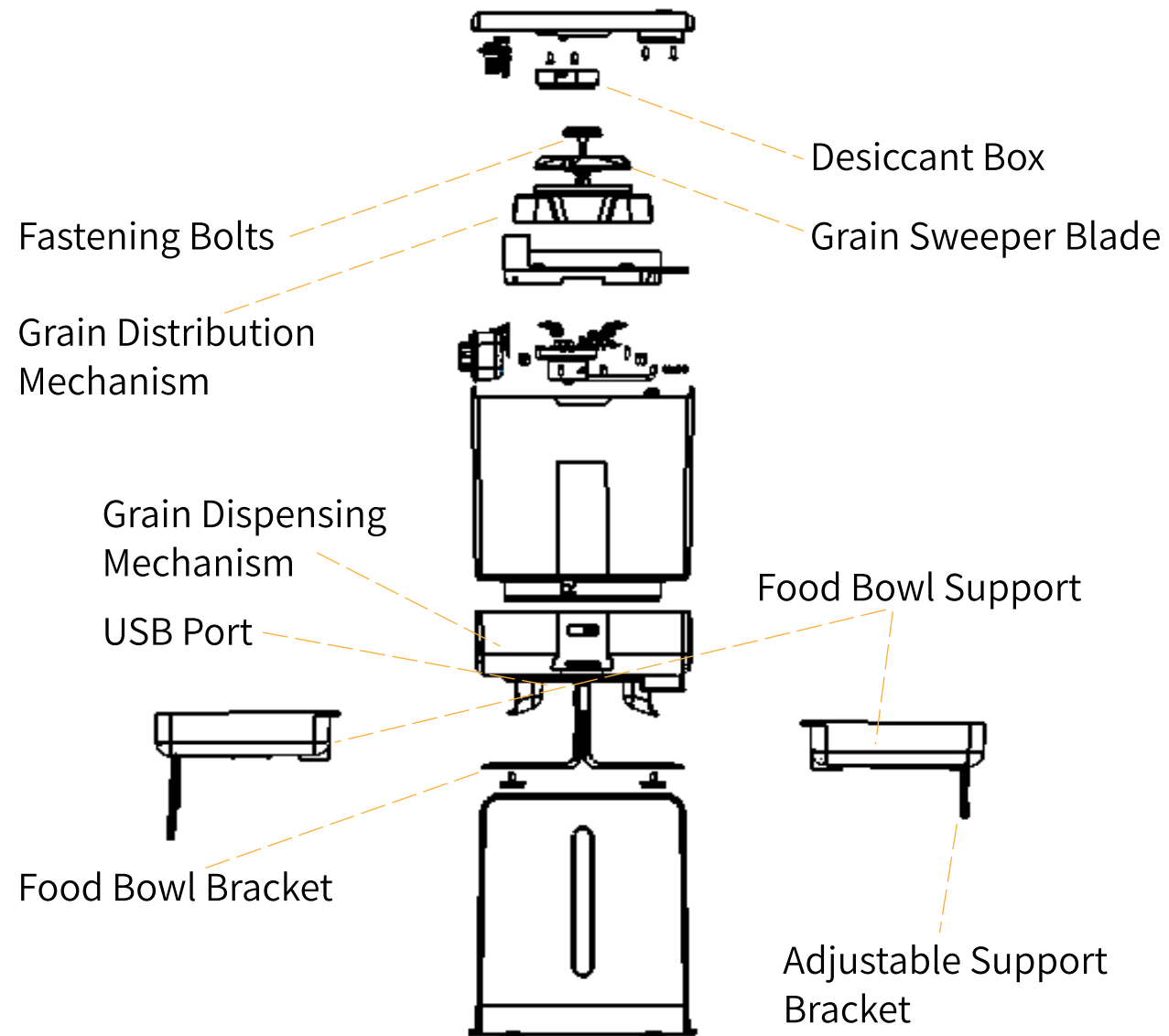
Packing List



Main Unit	1
Adapter	1
User Manual	1
Feeding Bowl Bracket	1
Feeding Bowl Support	2
Desiccant	1
TYPE-C Charging Cable	1
304 Stainless Steel Food Bowls	2

Product Introduction





① •Button (<) and Button (>) for left and right options.

•Button (REC) for recording.

•Button (Feed) for immediate feeding.

Press and hold both (<) and (>) buttons for 3 seconds to unlock or activate the child lock. After 30 seconds of inactivity, the screen will turn off and immediately enter the child lock. Press any button to wake up the screen.

②Function knob: Rotate clockwise to increase the value, and rotate counterclockwise to decrease the value. Press once to confirm the current setting and move to the next item. Press and hold to confirm the entire setting and exit.

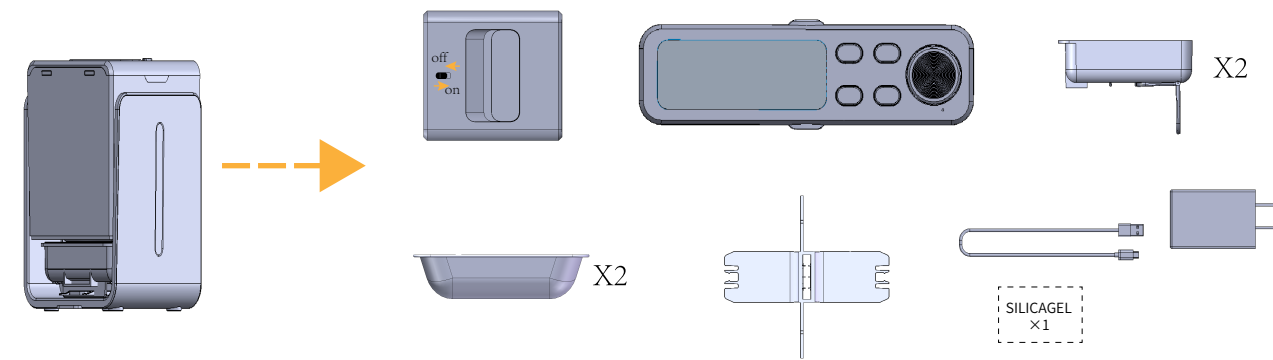
③The device uses 4 AA carbon batteries.

Product Specifications

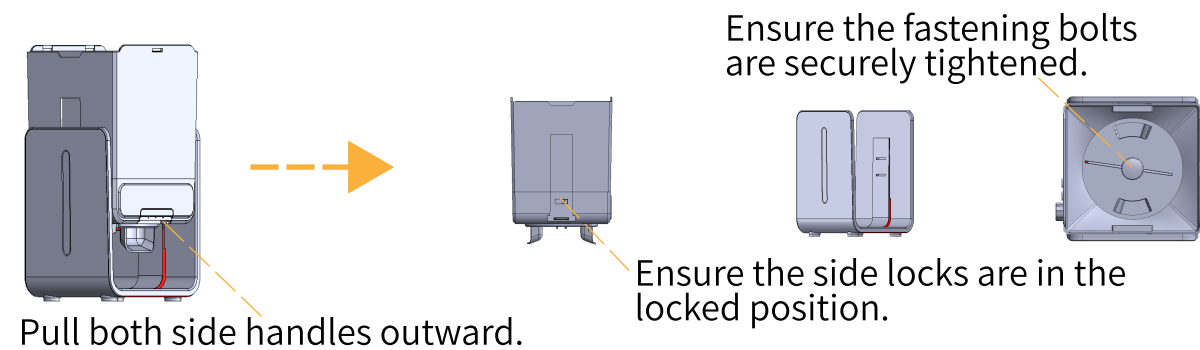
Product Name:	Automatic Pet Feeder
Product Model:	XWSQ01
Input Voltage:	DC6V (4 AA zinc-carbon batteries) or Type-C 5V
Pet Food Storage Capacity:	5.0L
Product Dimensions:	415 x 195 x 350 mm
Product Material:	304 Stainless Steel + ABS + TPE
Product Weight:	2.8kg
Suitable For Pets:	Cats and Small Dogs

Product Installation (Mechanism)

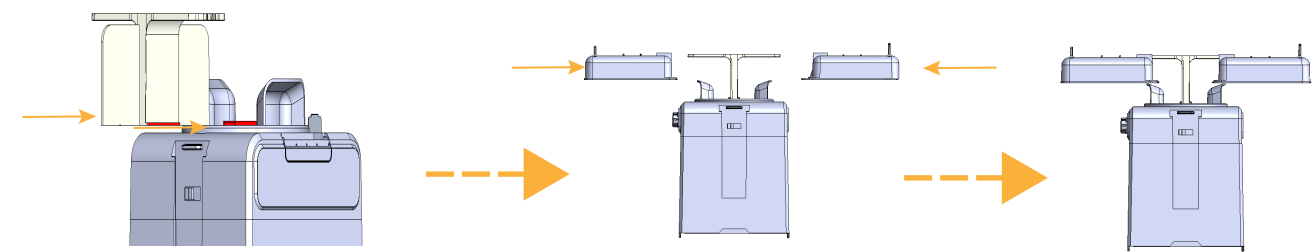
① Remove the product from the packaging. Open the upper lid and take out the control panel, stainless steel bowl, bowl bracket, bowl support, and the desiccant (to be installed later) from the food storage container (as shown below).



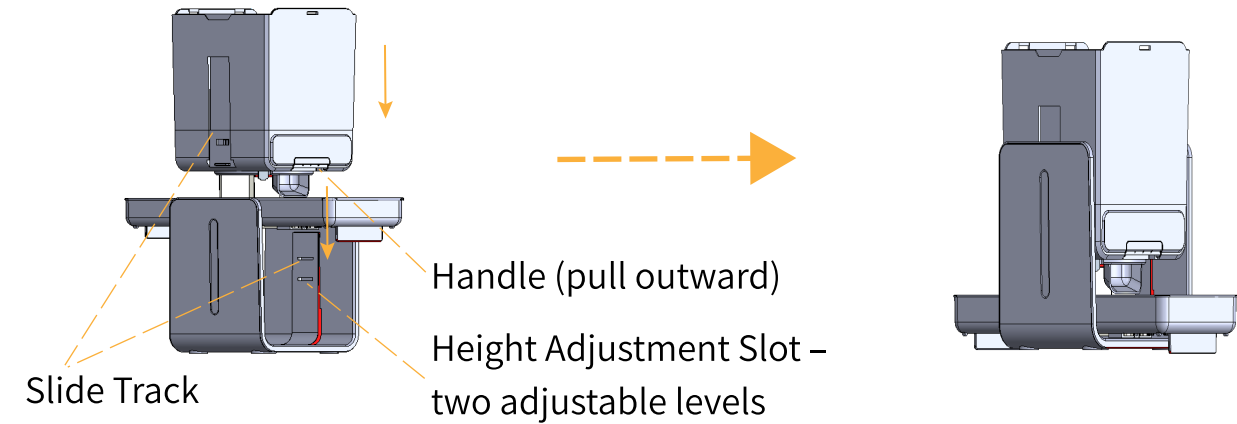
② Pull out the handles on both sides of the grain dispensing mechanism, then lift the main unit (food storage bin + dispensing mechanism) completely and place it on a flat surface, such as a table or floor (as shown below). Ensure that the food storage bin and dispensing mechanism latches are in the locked position and do not wobble. Check if the fastening bolts are loose—if they are, tighten them.



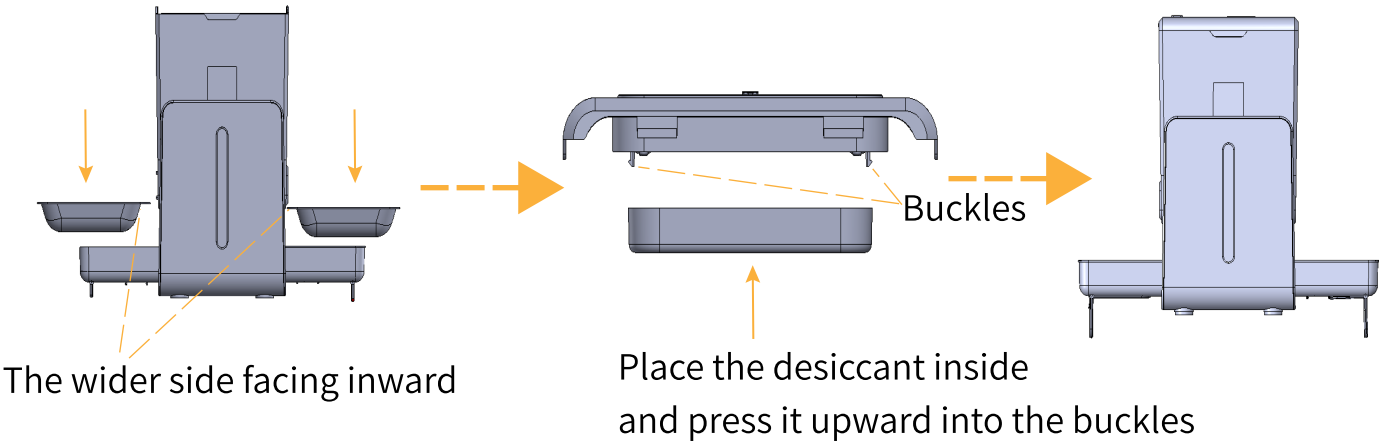
③ Flip the main unit over, then push Food Bowl bracket into the slot at the bottom of the dispensing mechanism, following the direction of the arrow on the slot, until it clicks into place. Then, attach the two bowl brackets by following the arrow directions (as shown below).



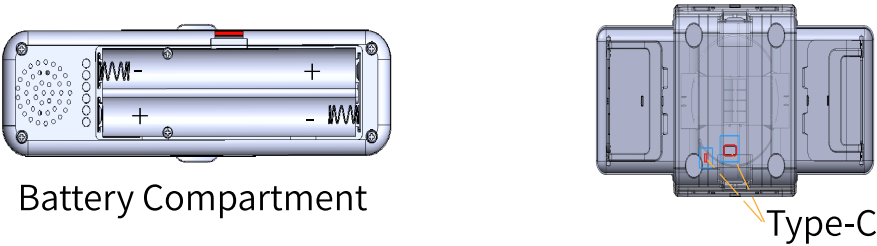
④ Pull the handles, align the slots on both sides of the food storage bin with the slots on the body bracket, and slide it down to the desired installation height (there are two available height positions). Release the handles, and the main unit will automatically slide into place and lock securely with the latch on the body (as shown below).



⑤ Install the left and right stainless steel food bowls. Add food into the bowls. Remove the outer packaging of the desiccant, place it into the desiccant compartment, and close it securely. Then, put the upper lid back on (as shown below).



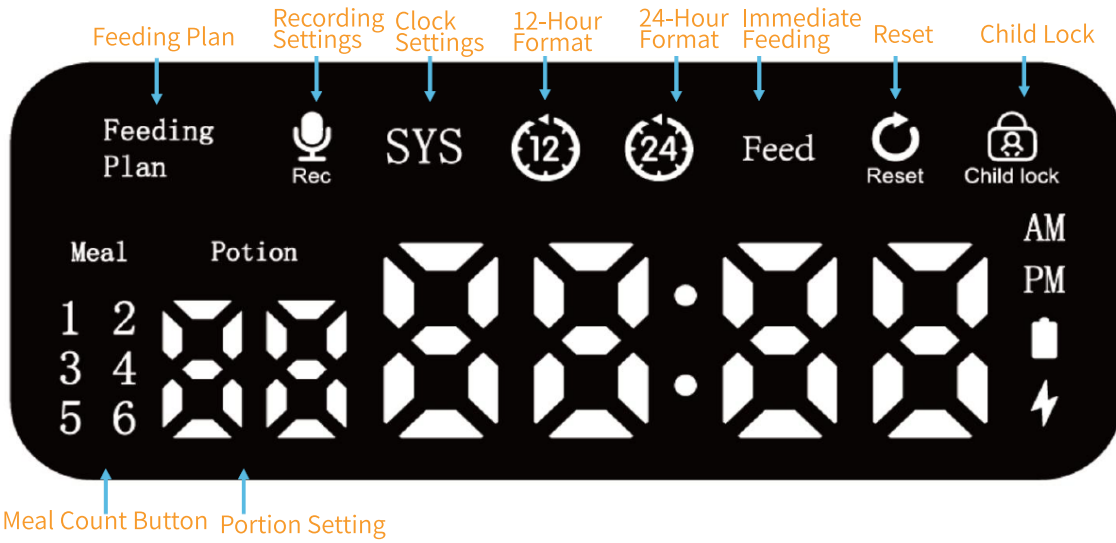
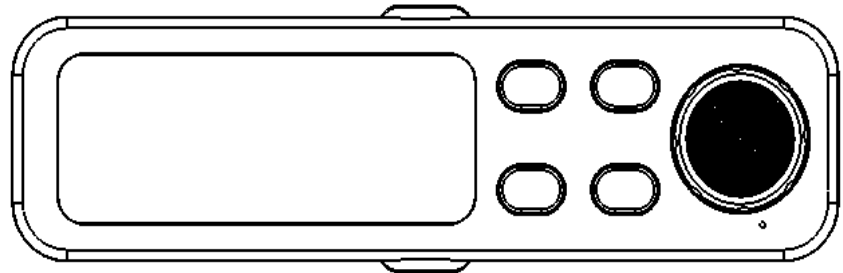
⑥ Insert 4 AA carbon batteries into the main control panel (pay attention to the positive and negative ends, as shown below). Set the desired parameters (refer to the control panel function page), then insert the panel into the main unit to start using the feeder. If using Type-C power supply, thread the cable through the square hole at the bottom of the support frame and plug it into the Type-C port at the bottom of the dispensing mechanism (as shown below). Connect the other end to the adapter.



⑦ Once installation and parameter settings are complete, the feeder is ready for use.

Product Usage (Main Control)

Introduction to Control Panel Functions

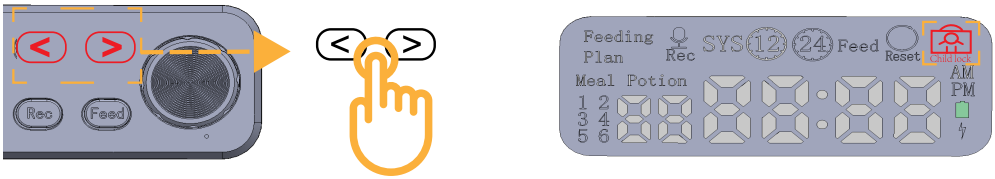


Program Settings (Control Panel)

Main Menu

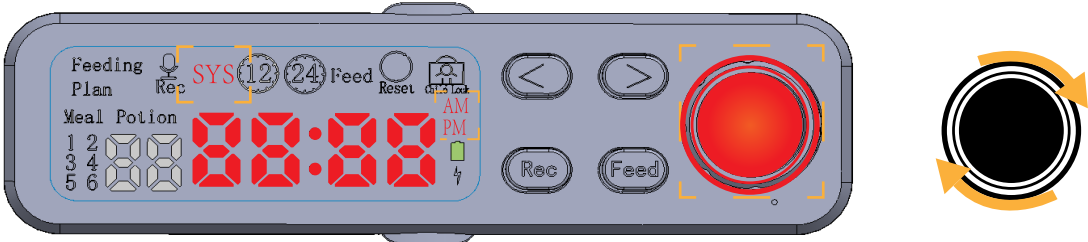
1. Unlocking the Screen

All parameter settings require the screen to be unlocked. While the screen is locked, press and hold both the (<) and (>) buttons for 3 seconds. The child lock icon will turn off, indicating the screen is unlocked and ready for parameter setting.



2.SYS Clock Setting

Press and hold the knob until the Feeding Plan icon starts flashing. Use the (<) or (>) button to “SYS.” Once the SYS icon flashes, the hour digits of the clock will also flash. Rotate the knob to adjust the current hour, then press the knob briefly to confirm. The minute digits will then flash. Rotate the knob again to set the current minutes. Press and hold the knob to confirm and exit the clock setting. (You can press the knob briefly to switch between hour and minute. To cancel the setting, press the (<) or (>) button to move on to other parameters).

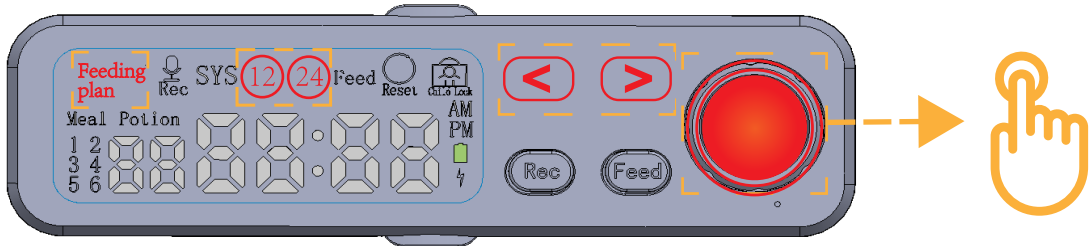


3.12-Hour / 24-Hour Clock Format Setting

A. To switch to the 12-hour format: Press and hold the knob until the Feeding Plan icon flashes. Use the (<) or (>) button to select the 12-hour format icon (the icon will flash). Then, press and

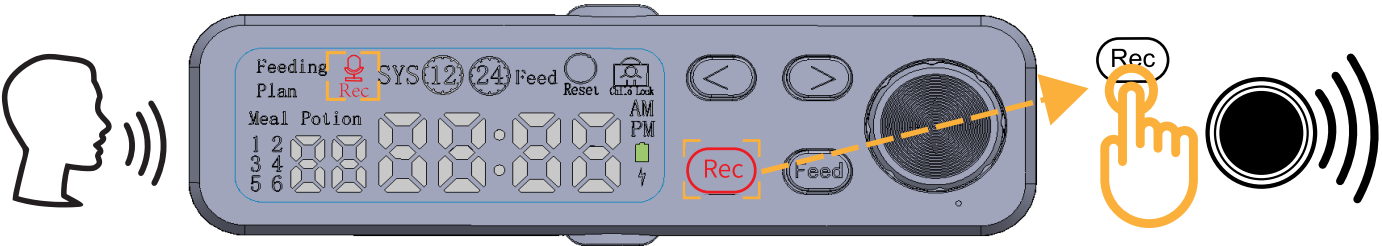
hold the knob to confirm and exit. The system will automatically switch to the 12-hour format.

B. To switch from 12-hour to 24-hour format: Press and hold the knob until the Feeding Plan icon flashes. Use the (<) or (>) button to select the 24-hour format icon, then press and hold the knob to confirm. To switch back from 24-hour to 12-hour format, repeat the same steps.



4.Recording

- A. While the screen is unlocked, press and hold the REC button. You will hear a prompt sound, and the recording icon will start flashing (it is off by default), indicating that recording has started. Release the REC button to finish recording (as long as the recording doesn't exceed the storage limit). The recording icon will turn off and the recorded message will play automatically. After playback, the recording process is complete.
- B. To re-record, repeat the steps in section A.
- C. To delete a recording, double-press the REC button while the screen is unlocked. The recording icon will flash quickly 5 times (once every 0.5 seconds), and you will hear a prompt sound indicating the recording has been cleared.

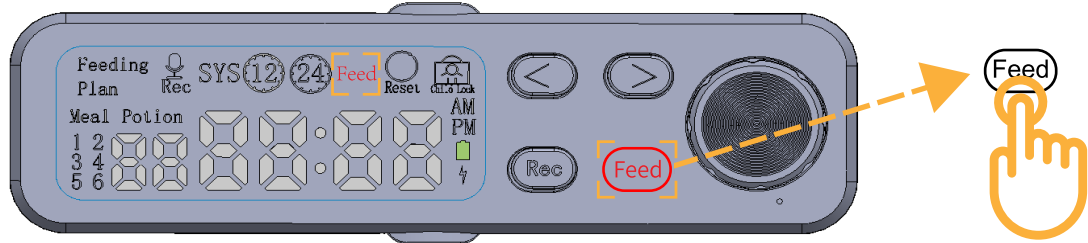


5.Manual Feeding

While the screen is unlocked, press the Feed button briefly. The main menu “Feed” icon will flash, and the feeder will immediately dispense one portion of food, followed by automatic playback of the recorded message.

Note: This function only works correctly when the control panel is installed in the main unit. Otherwise, error code E-01 and the time will flash alternately.

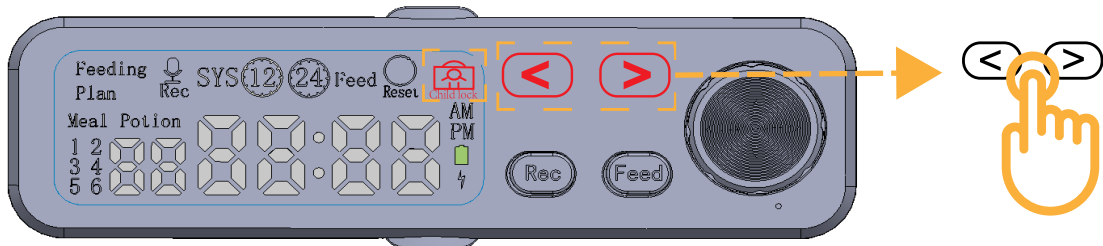
Error code E-02 will also appear and disappear after approximately 5 minutes.



6.Child Lock

Press and hold the (<) and (>) buttons simultaneously for 3 seconds to activate the child lock. The child lock icon will stay on.

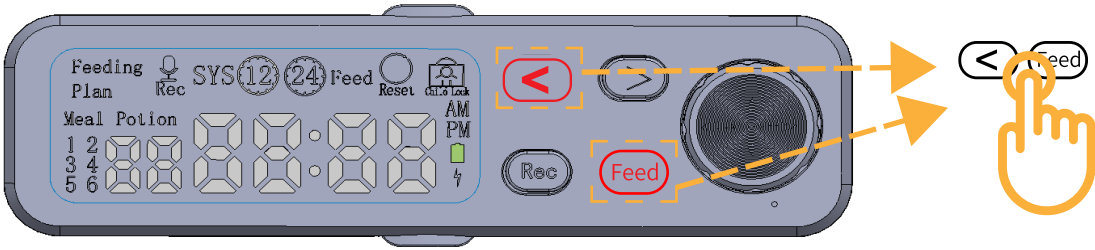
To unlock, press and hold both buttons again for 3 seconds. The icon will turn off.



7.Reset

When the device is unlocked,hold down the < button and the Feed button for about 3 seconds. The "Reset" icon will start to flash, with a 0.5-second on and 0.5- second off cycle.

The system will be restored to factory settings.



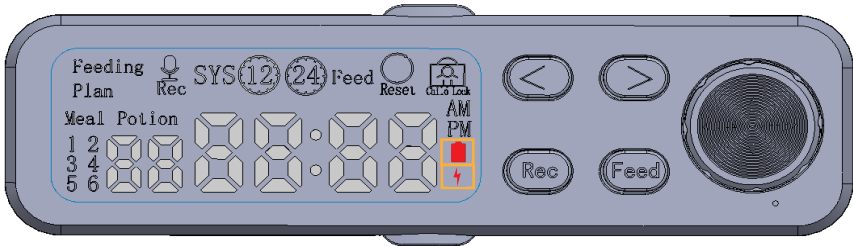
8.Power Supply Display

Battery power indicator icon

- When the battery level is above 10%, the green light stays on constantly.
- When the battery level is 10% or lower, the red light stays on constantly.
- When there is no battery, the light goes off.

TYPE-C battery level indicator icon

- When the Type-C power is connected, the lightning indicator stays solid green. When there is no power through the Type-C port, the indicator turns off.



9. Feeding Plan Setting

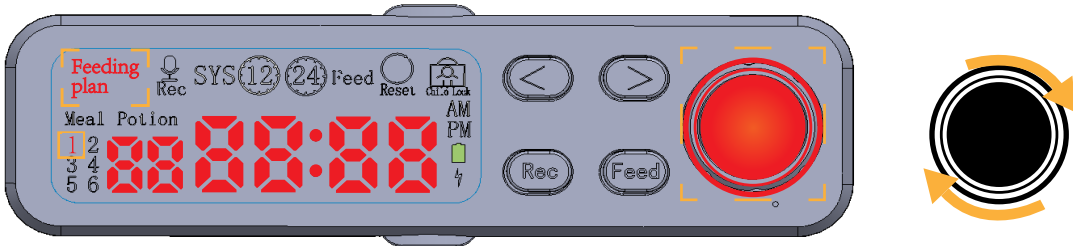
1. While the screen is unlocked, press and hold the knob until the Feeding Plan icon starts flashing. The Meal icon will stay on, and the number "1" under the Meal icon will flash (1 represents Meal 1; you can set up to 6 meals). To set this meal, press the knob briefly.

The "00" under Portion will flash. Rotate the knob to select the desired portion (00 indicates the portion size; you can set 1 to 24 portions based on your pet's needs).

Press the knob briefly to confirm. The system will then automatically switch to feeding time setting. The hour digits will flash—rotate the knob to select the desired hour, then press the knob briefly to confirm.

The minute digits will then flash—rotate the knob to the desired minute.

- Press the knob briefly to confirm and automatically move on to the next meal (Meal 2) setting.
- Press and hold the knob to confirm and exit to the main screen.



2. Set Meal 2 to Meal 6 following the same steps as in Section (Users can set these meals based on actual needs. Unset meals will not be active).

3. Notes

- A. Rotate the knob clockwise to increase values and counterclockwise to decrease values.
- B. During the setting process, if no action is taken within 60 seconds, the system will not save the settings and will return to the main screen automatically.
- C. On the clock interface: Meals that have already been dispensed will not be lit. Meals that are scheduled but not yet dispensed will be lit. The meal currently being dispensed will flash.
- D. After each meal is dispensed, the recorded message will play. (If no recording is stored, nothing will be played.)
- E. The device is equipped with a jam-prevention feature. If error code E-02 appears, it may be caused by excessive meal count or portion size, leading to a blocked outlet. We recommend adjusting the number of meals and portion sizes to appropriate levels.

The Desired Amount of Kibbles

Note

The amount of every portion is not adjustable. Pet owners should adjust the number of portions based on their pet's daily meals and appropriate amount per meal.
The size of the kibble we used in our lab: 0.3 inch. Here's the data from our experiment.

Cup	Portion	Gram	oz	ml
1/16	1	8	0.28	8
1/8	2	16	0.56	16
1/4	4	24	0.84	24
1/3	6	32	1.12	32
1/2	8	48	1.68	48
1	12	96	3.36	96

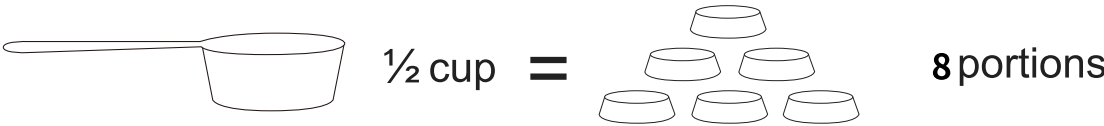
This data is for reference only. You need to test out the right amount for your pet, based on the dry food you used.

Tips

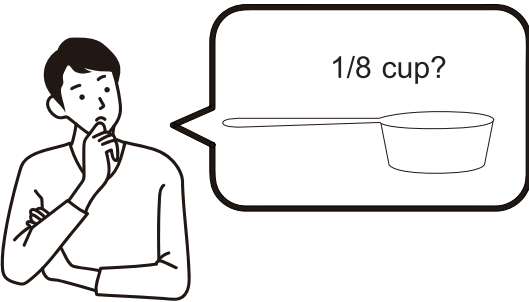
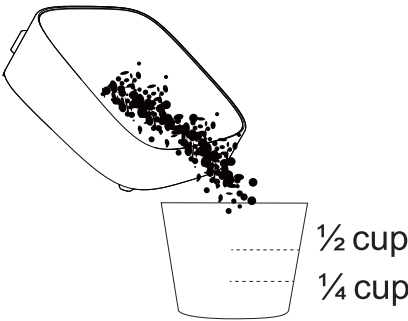
- 1. The PORTION number shown on the display means the amount for each bowl.
- 2. It Does Not support to deliver different portions to each bowl.

Here are the steps

- 1. In the following steps, let's assume that your two pets eat the same amount.
- 2. For example, 1/2 cup equals to 8 portions, so 1/4 cup would equals to 4 portions.



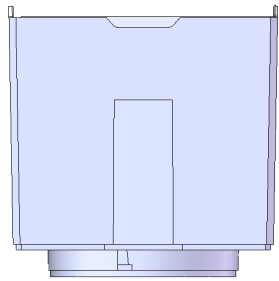
- 3. If you want a 1/4 cup amount, set the portion size to 4 servings.
- 4. Measure the delivered kibbles. If the kibbles are measured as the amount you need, it means this setting is OK.
- 5. Otherwise, adjust the portion number to let it get close to the desired amount.



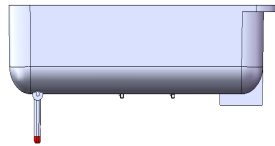
Cleaning and Maintenance

* Note

The following parts are washable (can be rinsed or soaked, but must be wiped dry with a clean cloth after washing). All other components are wipe-clean only (surface cleaning only; do not rinse or soak).



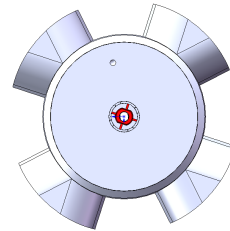
Food Storage Container



Food Bowl Supports



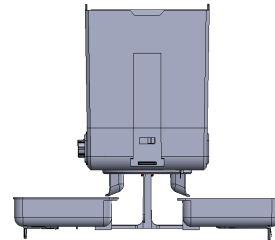
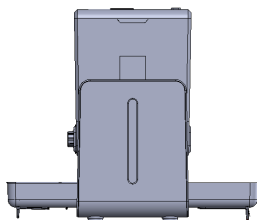
Stainless Steel Food Bowls



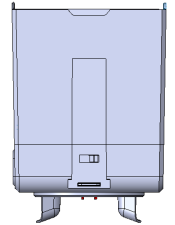
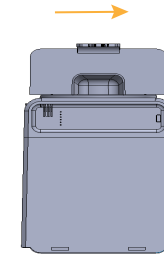
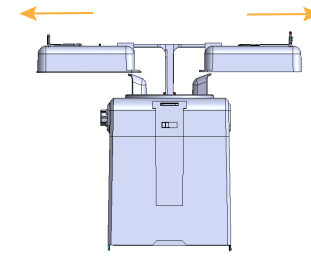
Food Dispensing Rotor

* Disassembly

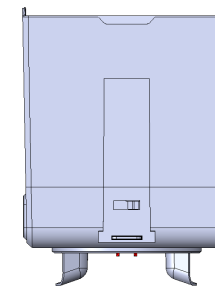
① Pull the handle on one side of the dispensing mechanism to remove the main unit (food container + dispensing mechanism) completely. Place it on a flat table or floor. Remove the control panel and open the upper lid (as shown below).



② Remove the food bowls, food bowl supports, and food bowl bracket by following the direction of the arrows shown in the diagram. If there is any remaining food in the container, turn the food storage container upside down to empty it (as shown below).

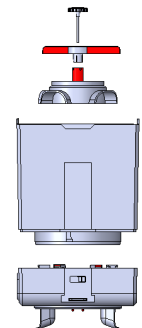
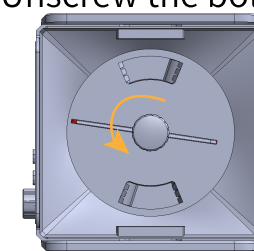


③ Switch the lock between the food hopper and the dispensing mechanism to the unlocked position. Flip the main unit over, then rotate the fastening bolt inside the food hopper counterclockwise until fully loosened. Remove the food agitator blade, food storage bin, and portioning disc individually for cleaning (as shown below).



Unlock

Unscrew the bolt



Remove upward

④ After cleaning, wipe off any remaining water on the surface with a dry cloth. Reassemble all parts in their original positions. The device is now ready for use.

Important Notes

- Before disassembling and cleaning, make sure to turn off the machine and disconnect the power supply.
- Except for the food hopper, stainless steel food bowls, food bowl supports, and portioning disc, all other components must not be washed with water. Clean them only with a wrung-out cloth.
- Do not rinse the main unit.
- This product is not suitable for high-temperature cleaning.
- If the machine will not be used for an extended period, be sure to turn it off and disconnect the power supply.

Safety Precautions

*** Failure to comply with the following precautions may result in product malfunction or pose safety risks.**

- Please install and use this product strictly in accordance with the instructions.
- Do not rinse the main unit directly with water to avoid short-circuiting or damaging the electronic components.
- Do not insert your hands into the food inlet or outlet to avoid getting pinched or injured.
- Do not hang heavy objects on the main unit, as it may cause damage, tipping, or accidents.
- It is not recommended for children to operate this machine. Do not allow children to treat it as a toy or sit on it.
- Only qualified maintenance personnel are allowed to repair this product. Unauthorized repairs may result in accidental injury.
- Do not place or use this product outdoors, in bathrooms, or in humid or extreme weather conditions such as rain or snow.
- If the product has been damaged due to drops or impact and cannot function properly, stop using it immediately. Do not attempt to force it to operate.
- Do not touch the power supply section of the product with wet hands.
- Keep the product away from open flames, heat sources, or high-temperature environments.
- Please use a certified brand adapter. Ensure the voltage and current meet this product's requirements, and follow the adapter's usage instructions.
- If you encounter any other issues while using the product, please contact customer service promptly.

Simple Troubleshooting

1. The indicator light does not turn on:
Check whether the batteries have sufficient power and whether the positive and negative terminals are installed correctly.
2. Panel indicates dispensing, but no food is released (motor sounds can be heard): This may be due to food being stuck in the rotating disc. Turn off the power, pour out any remaining food, and gently tap the machine to see if the issue resolves. If the problem persists, please contact customer service for assistance.
3. The device is equipped with an anti-jamming function. If error code E-02 appears on the screen, it may be due to excessive meal counts or portion sizes causing a food outlet blockage. We recommend adjusting to a more reasonable meal and portion setting.

Contact Us

WE ARE READY TO HELP

CityFlee offers a standard 1-year warranty. If you experience any issues with your product, please contact us through Amazon's messaging system, including your proof of purchase and any relevant photos or videos to help expedite the process. Our customer support team is available 7 days a week and will respond to your inquiry within 24 hours. Thank you for choosing CityFlee.

Please note that the warranty does not apply to used products or purchases made from unauthorized sellers. It also does not cover consumable parts such as desiccants, filters, and other similar items that require regular replacement or maintenance.

Scan to download instruction manuals in other language versions



die deutsche
Version



la version
française



日本語版
(にほんごばん)



la versión en
español



la versione
italiana



中文版

Manufacturer: Shenzhen Xinlin Yuding Technology Co.,Ltd.

Manufacturer's Address: Street, Baoan District, Shenzhen Building 11, Zone A, First Industrial Zone, Gonghe Community, Shajing.



MADE IN CHINA